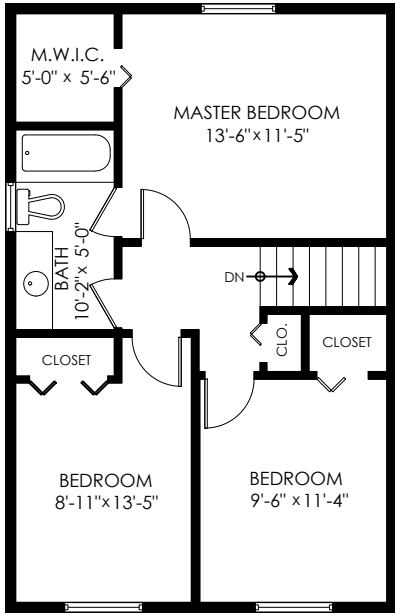


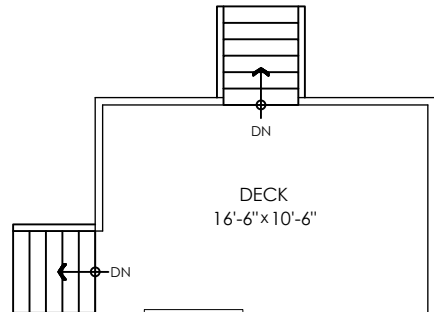
Main Floor: 516 sq.ft.
 Upper Floor: 612 sq.ft.
 Lower Floor: 319 sq.ft.
 Basement Floor: 482 sq.ft.
Total: 1,929 sq.ft.

Ext Storage 15'x9'-8": NA
 Restricted Headroom: 339
 Ext. Storage 7'x11'6": NA
 Deck: 174 sq.ft.

SCALE
 0' 5'

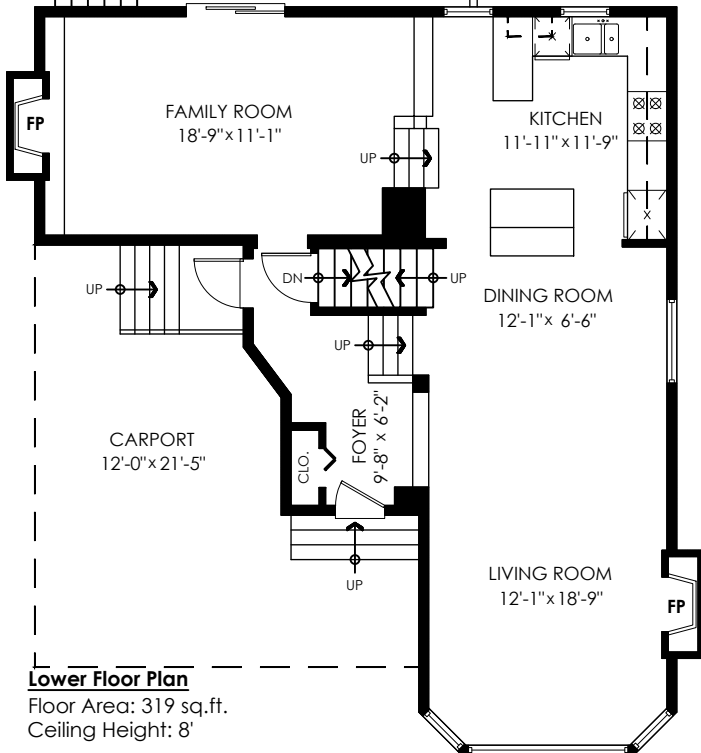
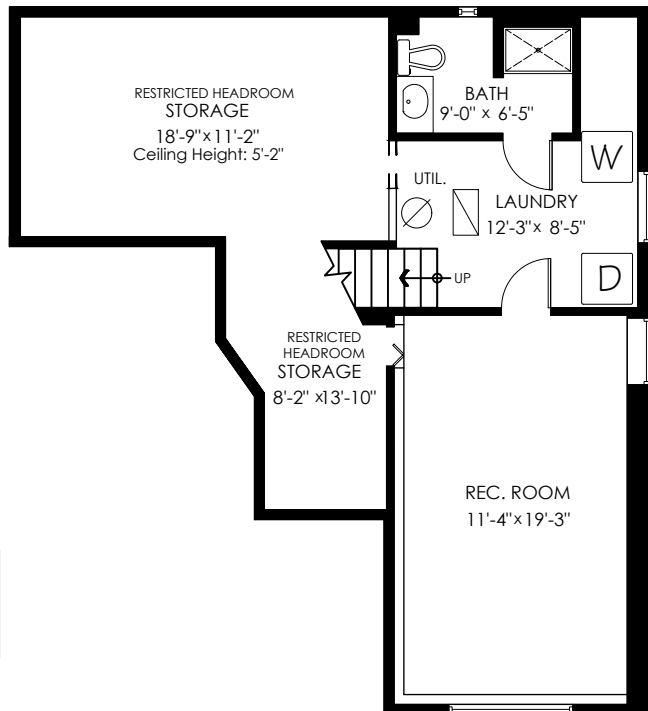


Upper Floor Plan
 Floor Area: 612 sq.ft.
 Ceiling Height: 8'



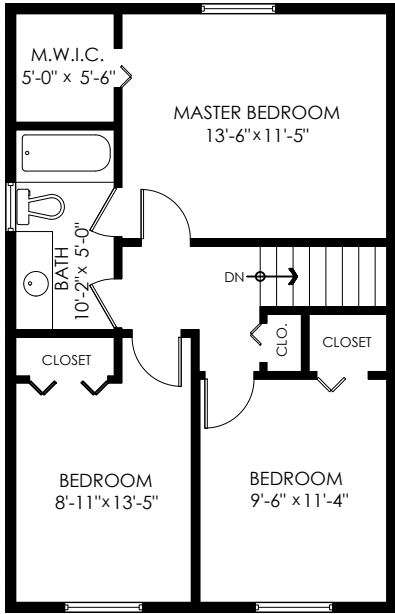
Main Floor Plan
 Floor Area: 516 sq.ft.
 Ceiling Height: 8'

Basement Floor Plan
 Floor Area: 482 sq.ft.
 Restricted Headroom: 339 sq.ft.
 Ceiling Height: 7'-11"



Lower Floor Plan
 Floor Area: 319 sq.ft.
 Ceiling Height: 8'

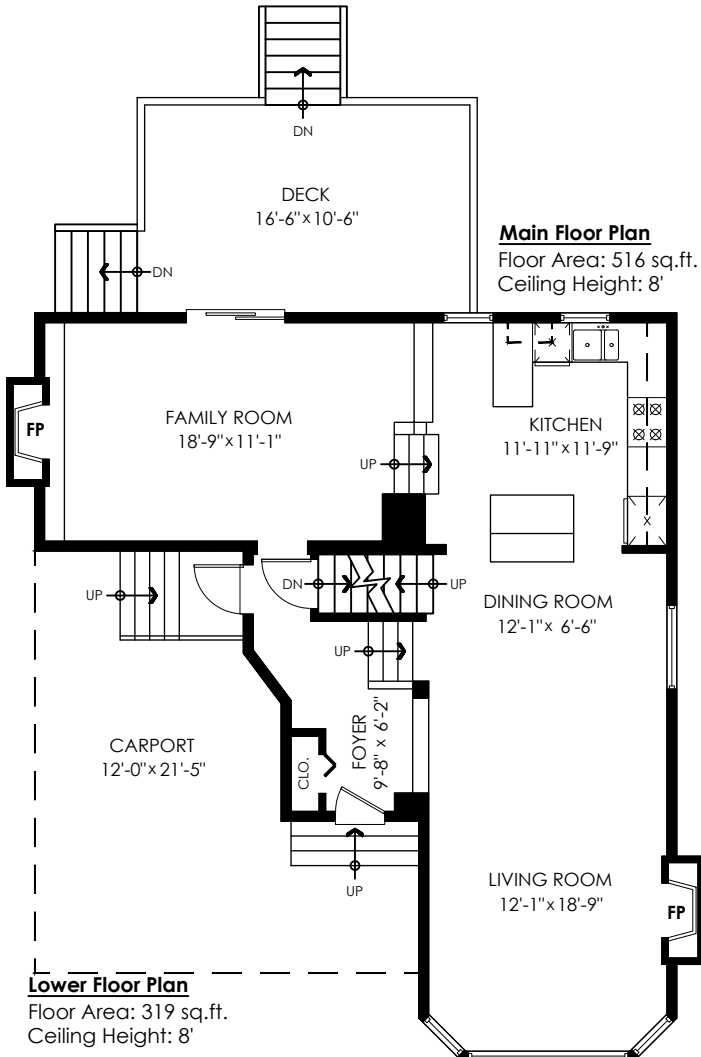
110 Croteau Court, Coquitlam



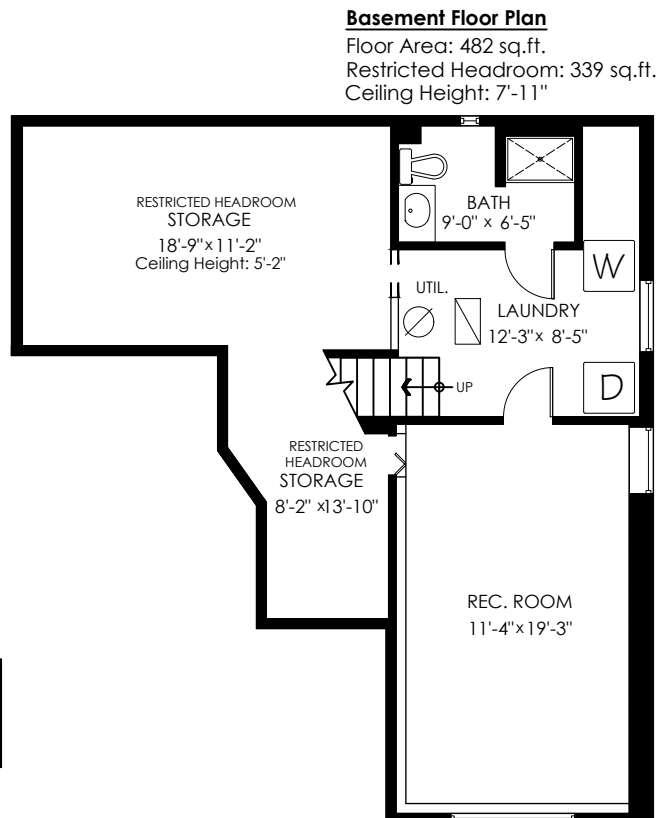
Upper Floor Plan
Floor Area: 612 sq.ft.
Ceiling Height: 8'

Main Floor:	516 sq.ft.
Upper Floor:	612 sq.ft.
Lower Floor:	319 sq.ft.
Basement Floor:	482 sq.ft.
Total:	1,929 sq.ft.

Ext Storage 15'x9'-8":	NA
Restricted Headroom:	339
Ext. Storage 7'x11'6":	NA
Deck:	174 sq.ft.



Main Floor Plan
Floor Area: 516 sq.ft.
Ceiling Height: 8'



Basement Floor Plan
Floor Area: 482 sq.ft.
Restricted Headroom: 339 sq.ft.
Ceiling Height: 7'-11"



Houses:

Total square footage is calculated to the outside of exterior walls.

Room sizes are dimensioned to the inside of the walls. This is because you need to know what you can fit in that room. When you add up the total of the room sizes it will not equal the total square footage of the property. This method of adding up room sizes will not account for wall thickness, interior hallways, exterior wall thickness, closets and many other areas that are included is total sqft.

Any space that is not suitable for year-round use or has a ceiling height of less than 4 feet will not be considered living space. An example of this includes a deck, garage or attic. If there isn't heat, insulation or room for an adult to stand, then it will not be included in the living space.

Cantilevered fireplaces, chimneys and plant windows are also not considered living space.

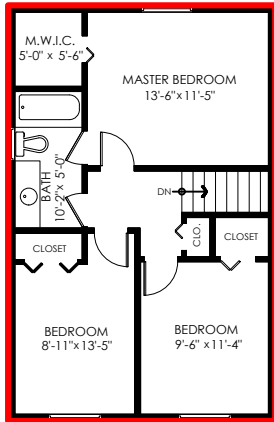
Included in the living space will be the measurements for stair treads for the floor they service as well as the space under the lowest floor's stairs.

Areas open to the floor below (also known as double height ceilings) are not considered living space because there is no floor.

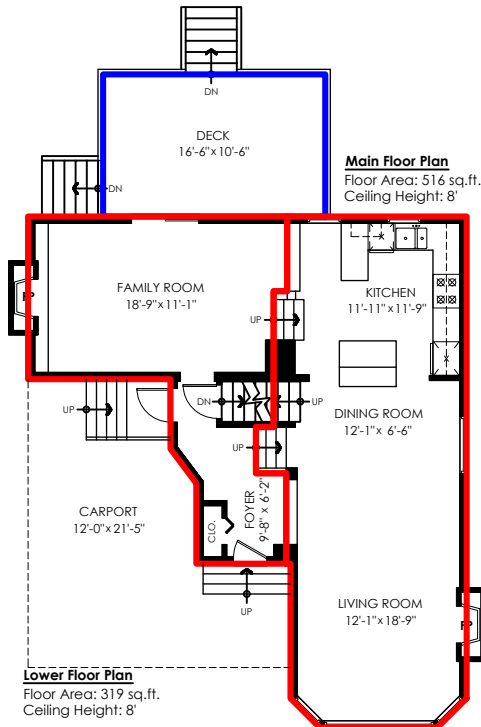
110 Croteau Court, Coquitlam

Main Floor:	516 sq.ft.
Upper Floor:	612 sq.ft.
Lower Floor:	319 sq.ft.
Basement Floor:	482 sq.ft.
Total:	1,929 sq.ft.

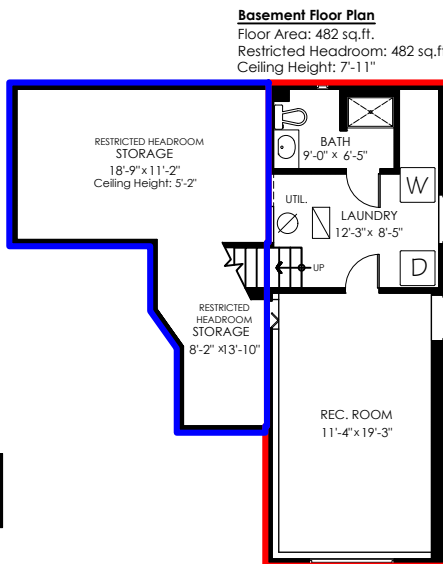
Ext Storage 15'x9'-8":	NA
Restricted Headroom:	339
Ext. Storage 7'x11'6":	NA
Deck:	174 sq.ft.



Upper Floor Plan
Floor Area: 612 sq.ft.
Ceiling Height: 8'



Main Floor Plan
Floor Area: 516 sq.ft.
Ceiling Height: 8'



Basement Floor Plan
Floor Area: 482 sq.ft.
Restricted Headroom: 482 sq.ft.
Ceiling Height: 7'-11"

Lower Floor Plan
Floor Area: 319 sq.ft.
Ceiling Height: 8'